

AxisAndOhs Installation

Distribution

Lorby AxisAndOhs is distributed as self-extracting installer packages, individual for every simulator.

Installation

- This application requires the .Net 4.8 Runtime and the VC++ Redist 2019 to be present on your computer.

<https://dotnet.microsoft.com/download/dotnet-framework/net48>

<https://support.microsoft.com/en-us/help/2977003/the-latest-supported-visual-c-downloads>

- Please use the installer intended for your sim:
 - **FSX Acceleration boxed or dual install with SE:**
LorbyAxisAndOhs_Install_FSX.exe
 - **FSX SE stand alone:**
LorbyAxisAndOhs_Install_FSX_SE.exe
 - **Prepar3D V2.5:**
LorbyAxisAndOhs_Install_P3D_V2.exe
 - **Prepar3D V3.x:**
LorbyAxisAndOhs_Install_P3D_V3.exe
 - **Prepar3D V4.x:**
LorbyAxisAndOhs_Install_P3D_V4.exe

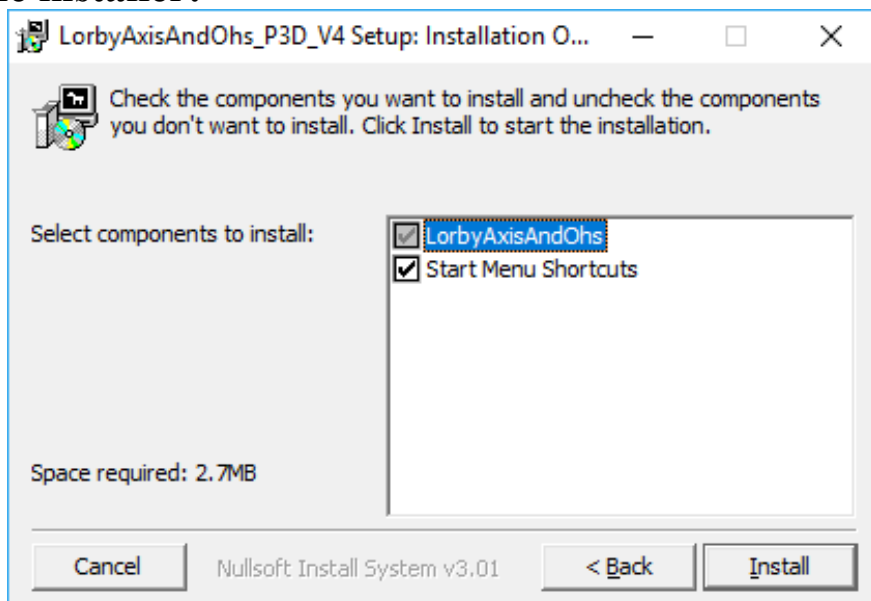
- **Prepar3D V5.x:**
LorbyAxisAndOhs_Install_P3D_V5.exe
- **Prepar3D V6.x:**
LorbyAxisAndOhs_Install_P3D_V6.exe
- **Microsoft Flight Simulator (2020):**
LorbyAxisAndOhs_Install_MSFS.exe
- **X-Plane 12:**
LorbyAxisAndOhs_Install_XPLANE.exe

AntiVirus

Some customers reported problems with AntiVirus programs blocking the AxisAndOhs installers. This behaviour is quite normal today unfortunately, as most AntiVirus software applies the simple rule "I don't know you, so you must be bad".

To avoid problems with AntiVirus (AVAST is especially violent) please exclude the AxisAndOhs installer and executables from the AntiVirus scan.

Running the installer:



On the first page you may select optional installation targets:

- “Start Menu Shortcuts”: Lorby AxisAndOhs will be added to your Start Menu (advised)
- Selecting “Install” will begin the installation